

SCHOOL IMPROVEMENT PLAN

2017-2018

Wahconah Regional High School

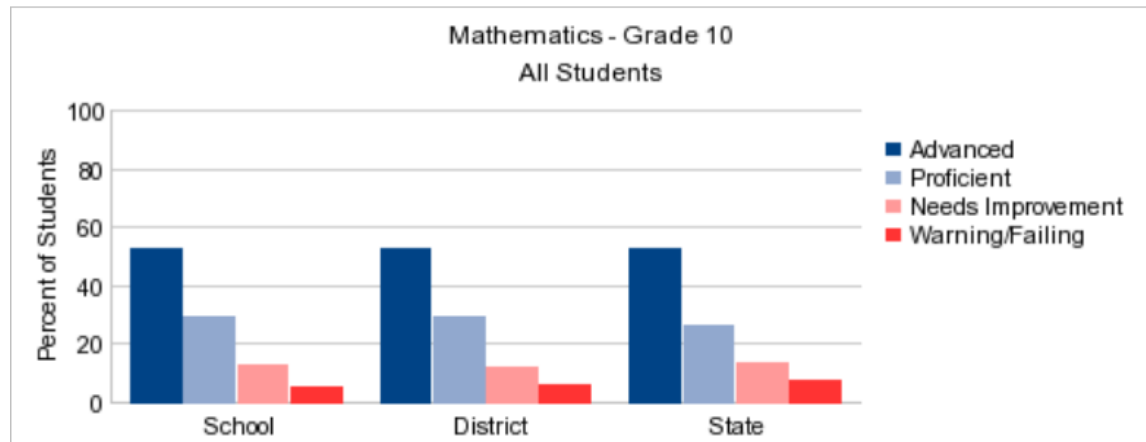
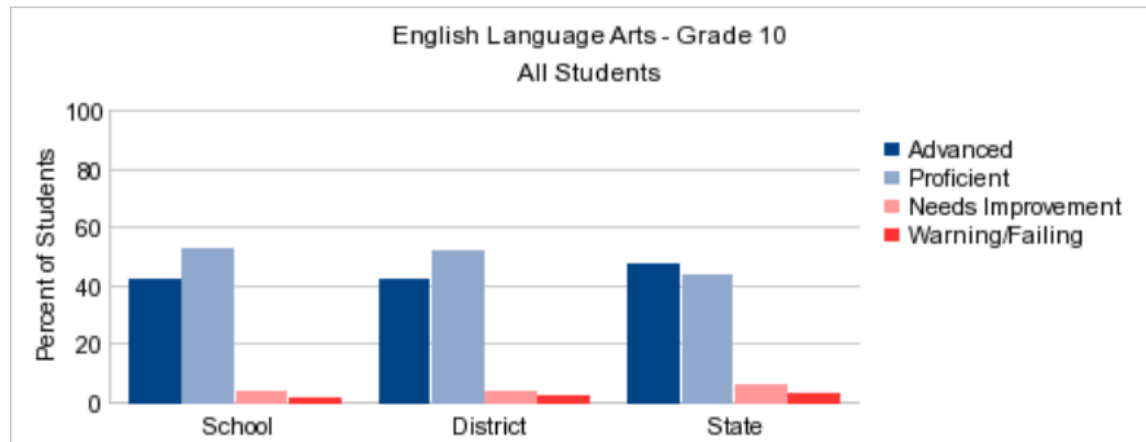
ASSESSMENT DATA

	2016	2017	2017
	<u>(Adv/Prof)</u>	<u>(Adv/Prof)</u>	<u>(State)</u>
ELA	96	94	91
Math	81	82	79
Science	87	73	75
<i>*Gr. 9 only</i>	<i>N/A</i>	79	75

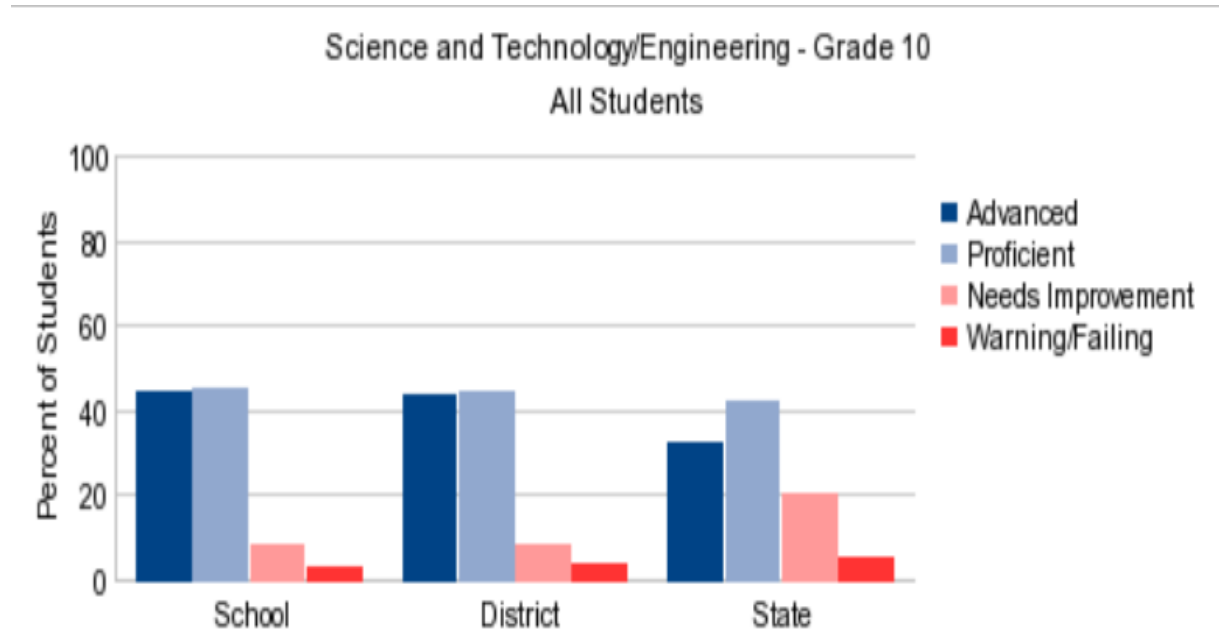
2016 – All of grade 10 and selected students from grade 9 honors classes took Science MCAS

2017 – All of grade 9 and selected students from grade 10 non-honors classes took Science MCAS

Breakdown of 2017 Data by Level



Breakdown of 2017 Data by Level



Student Growth Percentiles

- SGP is provided in math and English; SGP is not provided for Science
- Student Growth Percentile is the growth from previous MCAS performance to current (goal is to be between 40-60)
- It is important to be cautious with Grade 10 SGP's given the length of time between assessments (2 years)
- We report this but this is not as reliable a measure given fluctuation of testing in 8th grade

	<u>2015</u>	<u>2016</u>	<u>2017</u>
Math	58	50	32.0
English	59.5	49.5	46.5

Composite Performance Index

CPI progress on narrowing proficiency gaps toward 100% A/P

	<u>2015</u>	<u>2016</u>	<u>2017</u>
Math	92.3/62.5	92.1/NS	92.9/50
English	96.6/78.9	98.9/NS	98.5/87.5

Comparison of CPI with Berkshire County High Schools									
	CBRSD	SBRSD	Lenox	Lee	BHRSD	MGRHS	Pittsfield	NAPS	ACRSD
2016 Per Pupil	15,484	19,711	17,527	16,518	18,486	19,626	14,460	15,586	13,483
% EconDis	29.2	30.8	18.2	34.6	26	17.6	49.8	59.1	45
10ELA	CPI 98.5	CPI 98.9	CPI 100	CPI 98.7	CPI 98	CPI 98.1	CPI 96.1	CPI 95.9	CPI 94.4
10Math	CPI 92.9	CPI 90.9	CPI 94.1	CPI 94.3	CPI 91.7	CPI 91.5	CPI 86.2	CPI 82.9	CPI 85.6

AP DATA

% of students with qualifying scores of 3, 4, or 5

<u>Course</u>	<u>2016</u>	<u>2017</u>
Biology	58%	75%
Calculus AB	80%	63%
Chemistry	75%	54%
Eng. (Lang/Comp)	94%	63%
Eng. (Lit/Comp)	74%	75%

AP DATA

<u>Course</u>	<u>2016</u>	<u>2017</u>
Music Theory	43%	N/A
Physics 1	22%	32%
Statistics	54%	17%
US Gov't	2%	6%
US Hist.	17%	N/A

- *Expanded student enrollment to increase exposure to AP experience (more students taking AP than 4 years ago; more diversity among AP enrollment)*
- *AP Gov't was offered as a 2nd semester course; most schools offer it as a full year course*

Restructuring of Courses to Meet Student Needs

Changes to the Names of Courses:

1. IPAD Music has been renamed to Music Production to better reflect what is taught and attract new students.
2. Treble Choir previously existed as Women's Choir
3. We have renamed/reorganized courses that were previously labeled as Basic or Special Education (i.e. Human Body, Everyday Chemistry, Math Blast)

Universally Designing Existing Curriculum

Advanced Computer Programming is within Computer Programming and gives students opportunity to earn additional credit through additional assignment completion.

Restructuring of Course Sequence

- Movement of US History II from 10th to 11th grade
- Modern World History now taught in 10th grade

STUDENT ACHIEVEMENT

Goal:

- To increase student achievement in ELA, Math, and Science as measured by state and local assessment data
 - 90% or higher scoring proficient or higher
 - 95% or higher participation rate

Focus Areas:

1. Content Coordinators work with Dir. Of Teaching/Learning to lead Collaborative Inquiry data meetings with teachers for targeted courses.
2. Implement MCAS Math Intervention class (Math Blast) for targeted students.

STUDENT ACHIEVEMENT

Focus Areas (con't)

3. Implement MCAS Biology Intervention program (Bio Blast) after school for targeted students.
4. Implement “Study Island” benchmarking system for targeted classes in ELA and Math.

STUDENT ACHIEVEMENT

Focus Areas (con't)

5. Principal will meet with Dir. of Teaching/Learning bi-weekly to discuss progress made in Collaborative Inquiry data meetings.
6. District Administrative Team will meet monthly to identify patterns and trends in available data to monitor student progress.

STUDENT ACHIEVEMENT

Goal:

- To utilize data and research to support instructional practices that are based on the Universal Design for Learning (UDL) for the purpose of increasing student performance in all content areas.

Focus Areas:

1. Work with teachers to incorporate elements of UDL into their Professional Practice Goals.

2. Continue district-wide support from and relationship with Dr. Kristan Rodriguez during the CBRSD UDL “Explore” Phase.

STUDENT ACHIEVEMENT

Focus Areas (con't)

3. Conduct a district-wide “Evidence Based Instruction” survey for staff and analyze results.
4. Principal will meet with Dir. of Teaching/Learning bi-weekly to discuss progress made in implementing UDL practices.

STUDENT ACHIEVEMENT

Focus Areas (con't)

5. Principal will regularly conduct UDL walkthroughs of all classes.

6. District Administrative Team will meet monthly to identify patterns and trends in available data to monitor progress made in implementing UDL practices.

SCHOOL CLIMATE

Goal:

- To research and begin implementation of Positive Behavioral Intervention Supports (PBIS) in school-wide practices.

Focus Areas:

1. Conduct and analyze PBIS Self-Assessment Survey to examine the status and need for improvement in all behavior support systems.
2. Work with staff, students, and parents to identify and celebrate school-wide core values.
3. Work with staff to create a school-wide expectations matrix.

SCHOOL CLIMATE

Focus Areas (con't)

4. Create a school-wide behavior support plan to establish procedures for teaching behavioral expectations.
5. Key staff will obtain further PBIS training and begin implementation of restorative practices.

SAFETY

Goal:

- To initiate a new emergency procedure during morning drop-off.
- To explore logistics for an off-site Relocation and Reunification plan.

Focus Areas:

1. Work with MSP, DPD, and SEPC to identify areas of strength and areas for improvement for upcoming year.
2. Work with MSP, DPD and SEPC to plan for and implement a morning drop-off emergency response drill.
3. Work with MSP, DPD and SEPC to explore logistics for an off-site relocation and reunification plan.